

Where is the Oil Spill?

Largest environmental disaster in U.S., and possibly world history

By [Washington's Blog](#)

Global Research, June 21, 2010

[Washington's Blog](#) 18 June 2010

Region: [USA](#)

Theme: [Environment](#), [Oil and Energy](#)

In-depth Report: [THE BP OIL SLICK](#)

It's the largest environmental disaster in U.S. – and possibly world history.

But do you know exactly where it is? Could you point to a map and show where the oil rig sank?

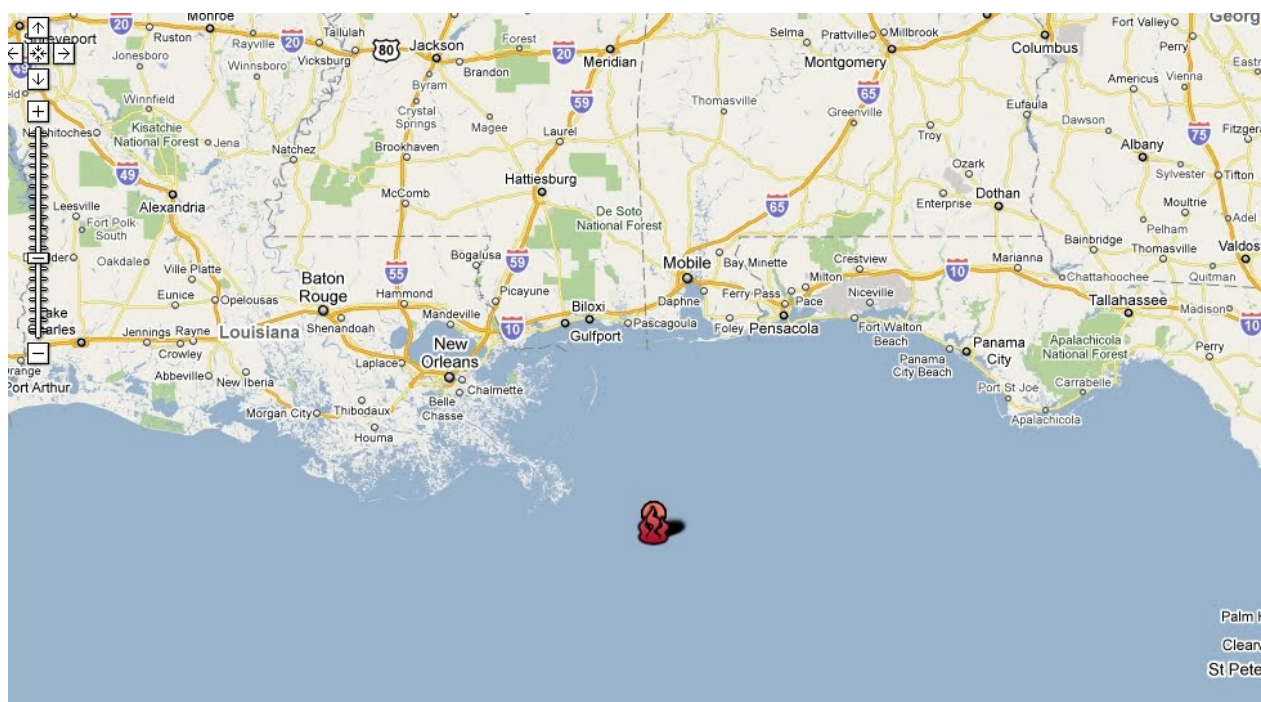
Do you know what the topography of the surrounding area is?

Hint: If you think it's flat seafloor – as implied by BPs [drawings](#) – you'd be wrong (the spill site is actually located within a giant canyon system, rather than on flat ground).

This essay will provide some basic orientation as to ground zero for the oil spill.

Where Is the Spill Site?

Here is the spill site – designated with the fire icon – as shown on Google maps:



This NOAA image gives a basic overview of the oil spill site in relation to the surrounding area:

Nearshore Surface Oil Forecast Deepwater Horizon MC252

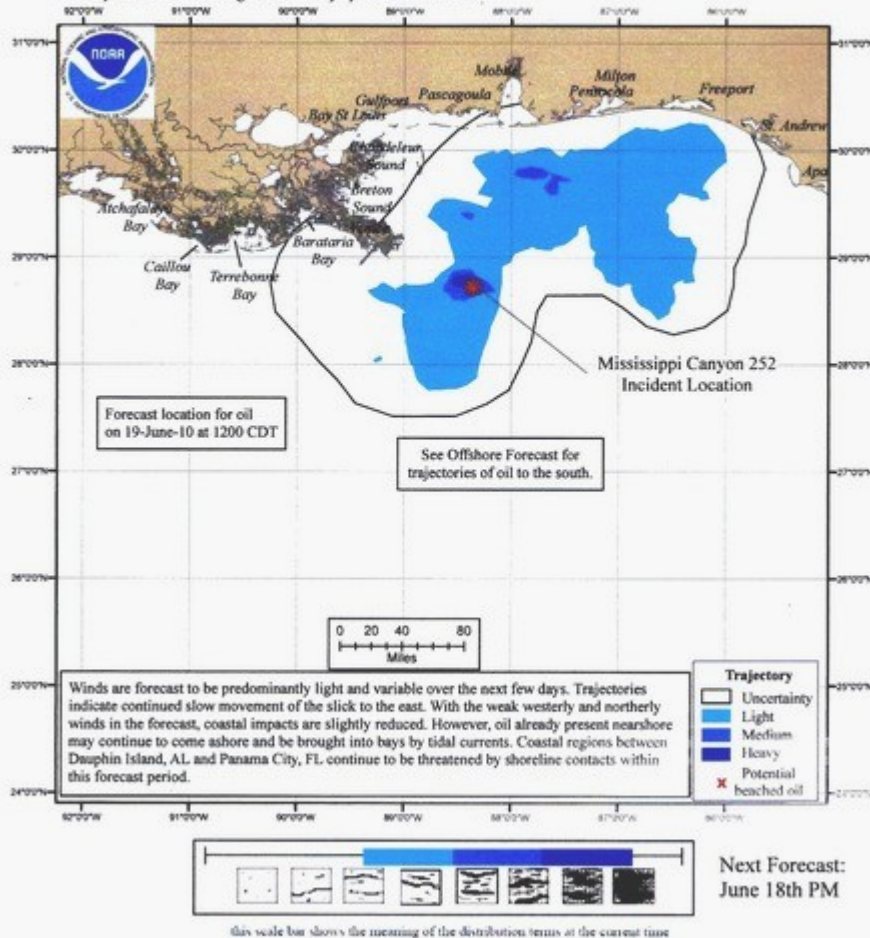
NOAA/NOS/OR&R

Nearshore

Estimate for: 1200 CDT, Saturday, 6/19/10

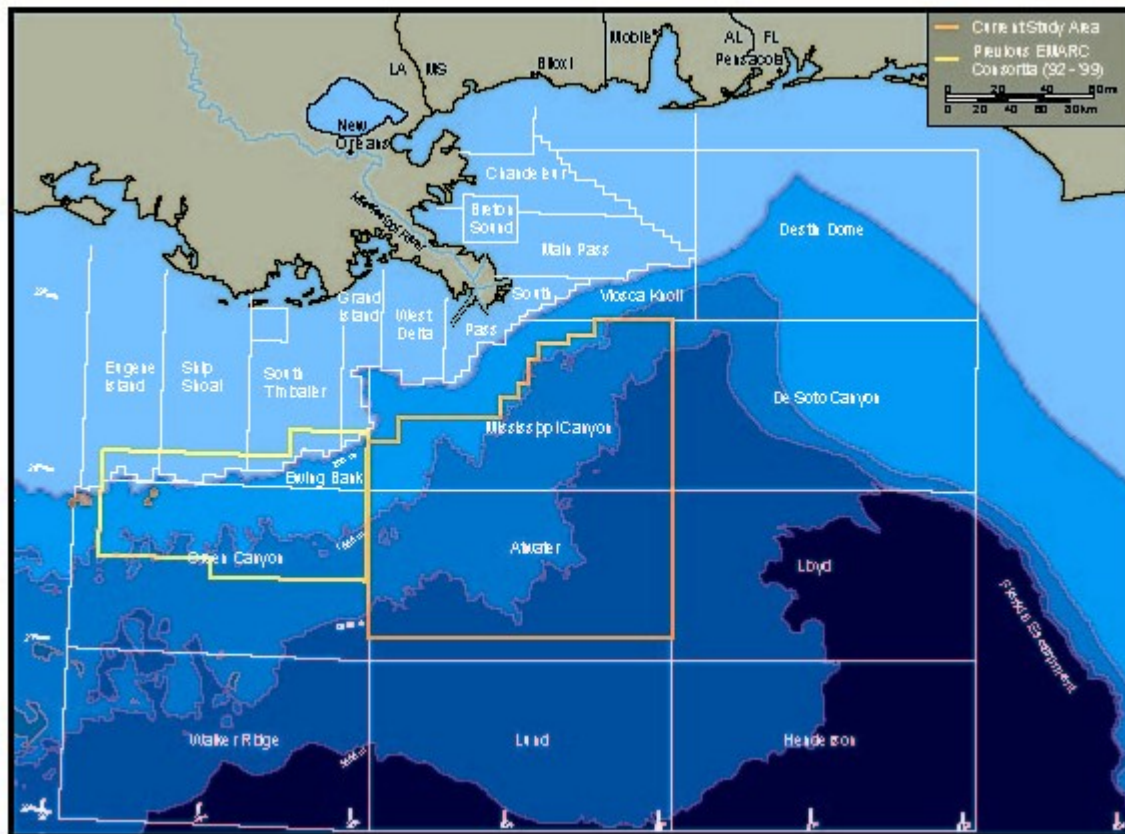
Date Prepared: 2100 CDT, Thursday, 6/17/10

This forecast is based on the NWS spot forecast from Thursday, June 17 PM. Currents were obtained from several models (West Florida Shelf/USF, TGLO/TAMU, NAVO/NRL) and HFR measurements. The model was initialized from Wednesday-Thursday satellite imagery analysis (NOAA/NERD) and HFR measurements. The model may contain tarballs that are not readily observable from the imagery (these are not included in the model) and near bay inlets could be brought into that bay by local tidal currents.



The oil spill is occurring within the “Macondo prospect”, which is located in Mississippi Canyon Block 252 in the Gulf of Mexico.

Here is an image [showing](#) the Mississippi Canyon compared to other areas in the Gulf of Mexico:



This shows the relation of Block 252 to nearby sites:

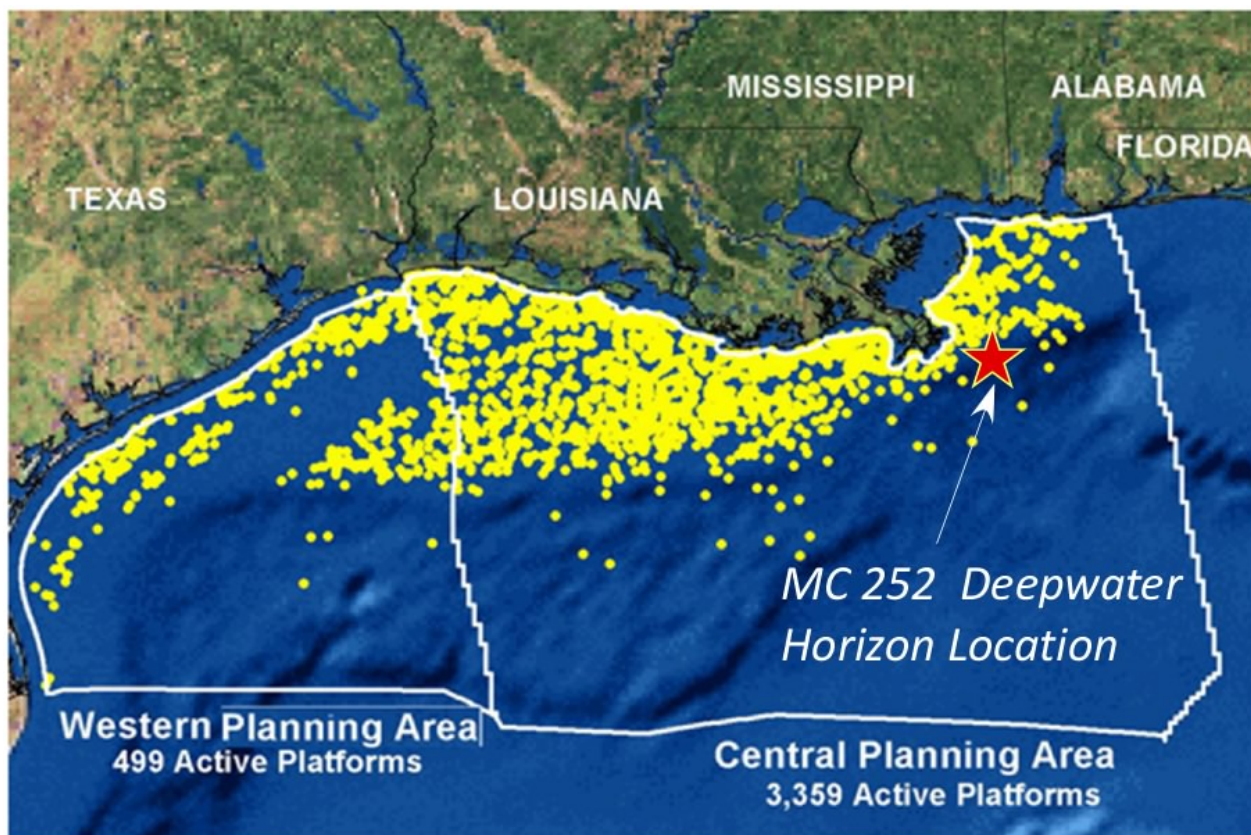
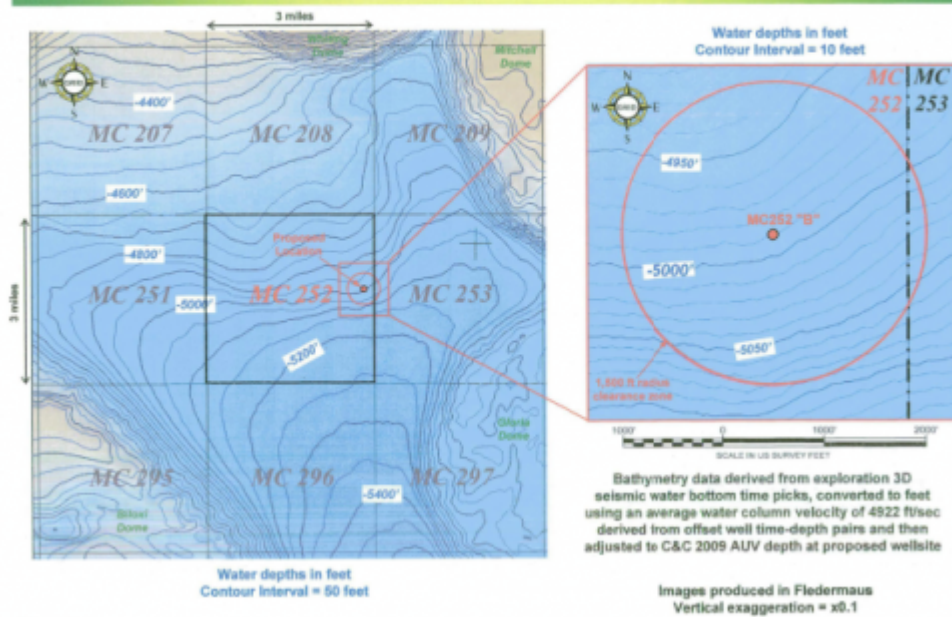


Figure 1. Mississippi Canyon Block 252 Location Map. From U.S. Minerals Management Service

Here is Block 252 shown in comparison with nearby sites:



Bathymetry Map Proposed Mississippi Canyon Block 252 "B" Location



And this is the definitive [high-resolution map](#) showing block 252 in comparison with other prospects in the Mississippi Canyon area and surrounding areas.

But in order to really get a feel for what's happening underwater, we should look at detailed topographic maps. Indeed, knowing the topography and the geology at the spill site is crucial in understanding the risks involved and being able to determine the best approach for stopping the leak.

Topography of the Spill Site

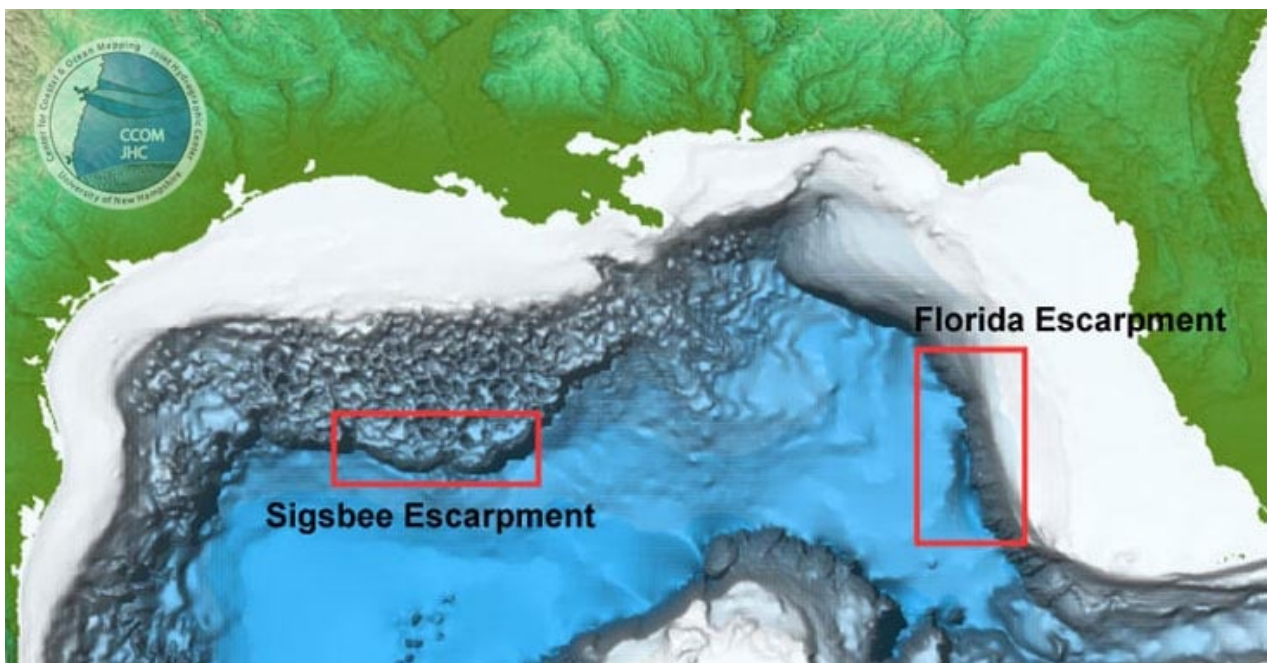
Here's a map of the Gulf of Mexico:



Here's another map courtesy of [Wired](#) (the spill site is between the two sets of red hash marks):



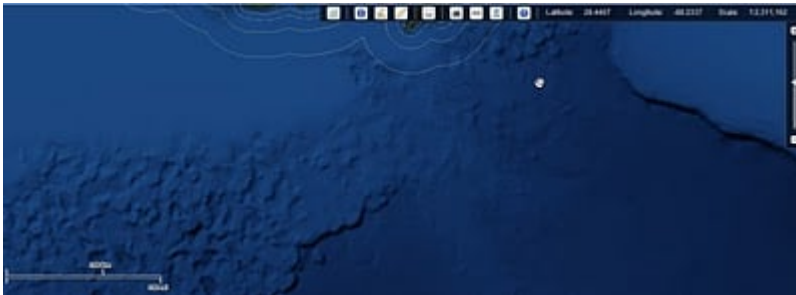
Here's an image of the Gulf of Mexico, showing the Sigsbee and Florida Escarpments (Block 252 is approximately half way in between the 2 escarpments):



Here is a satellite image of the area provided by the Minerals Management Service and NOAA's [Multipurpose Marine Cadastre](#):



Here is a close-up (I placed a hand icon at the approximate location of the oil spill based on latitude and longitude):



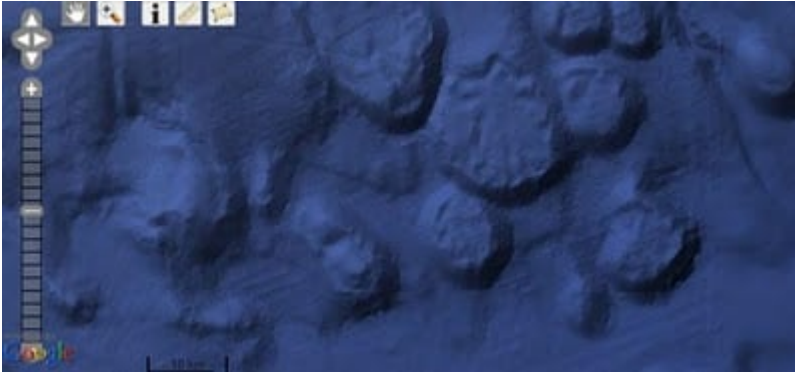
Here is an image – courtesy of NOAA's [GeoPlatform](https://geoplatform.noaa.gov/) service – showing the topography surrounding the leaking wellhead:



Here is a close up of the same image:

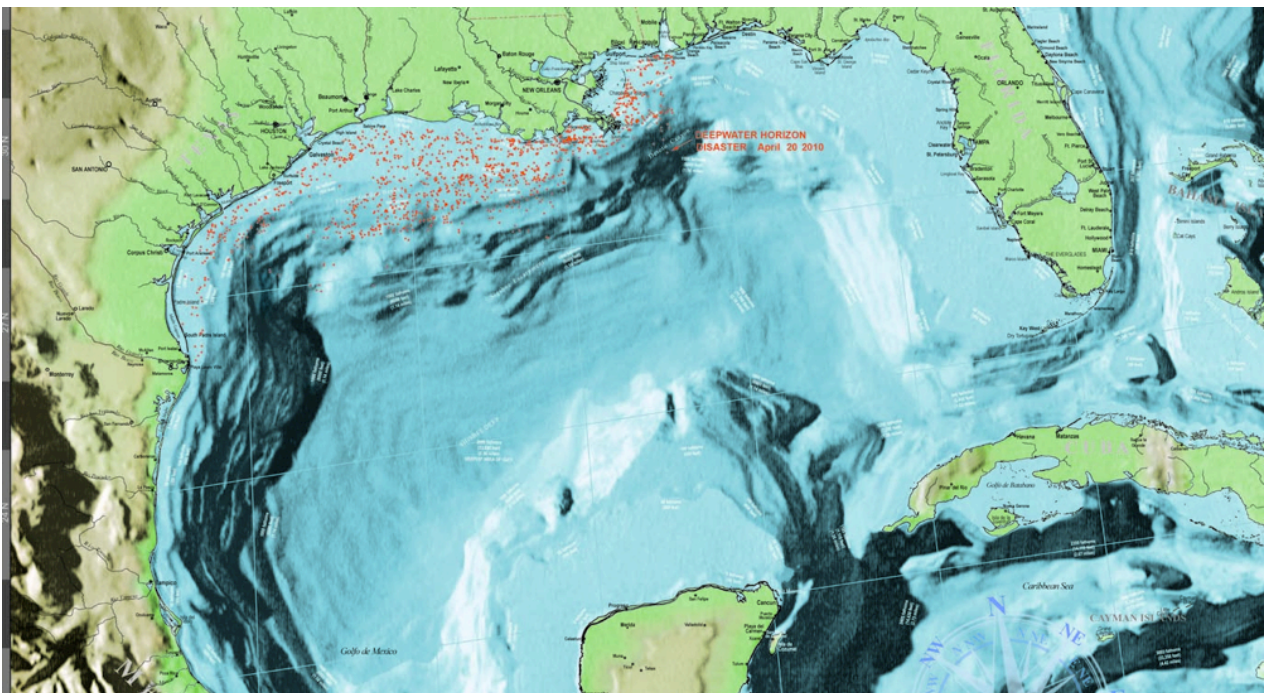


Here is the same image with the spill location indicator removed, so that you can see the slope of the area at the spill site:



(Note: the GeoPlatform service is also very useful for forecasting the near-term trajectory of the oil spill).

Here is a map giving a different view of the steep canyon in which the oil spill site is located:



Some oil industry professionals are [worried](#) that a landslide at the spill site could make the oil spill much worse by carrying away the blowout preventer, riser and all other equipment. While I have no idea how likely it is that a landslide could occur before the well is capped, it is true that:

- (1) The spill site is located in a steep canyon, as discussed above;
- (2) There are hundreds of feet of loose mud and muck on top of the sea floor in this area; and
- (3) Many deepwater, oil-rich areas within the Gulf are [tectonically active](#).

The original source of this article is [Washington's Blog](#)
 Copyright © [Washington's Blog](#), [Washington's Blog](#), 2010

[**Comment on Global Research Articles on our Facebook page**](#)

[**Become a Member of Global Research**](#)

Articles by: [Washington's Blog](#)

Disclaimer: The contents of this article are of sole responsibility of the author(s). The Centre for Research on Globalization will not be responsible for any inaccurate or incorrect statement in this article. The Centre of Research on Globalization grants permission to cross-post Global Research articles on community internet sites as long the source and copyright are acknowledged together with a hyperlink to the original Global Research article. For publication of Global Research articles in print or other forms including commercial internet sites, contact: publications@globalresearch.ca

www.globalresearch.ca contains copyrighted material the use of which has not always been specifically authorized by the copyright owner. We are making such material available to our readers under the provisions of "fair use" in an effort to advance a better understanding of political, economic and social issues. The material on this site is distributed without profit to those who have expressed a prior interest in receiving it for research and educational purposes. If you wish to use copyrighted material for purposes other than "fair use" you must request permission from the copyright owner.

For media inquiries: publications@globalresearch.ca