

# A “Black Swan Event” - General Michael Flynn Raises Questions About Baltimore Bridge Collapse. Chaos in Supply Chains and Trans-Atlantic Trade

By [Zero Hedge](#)

Global Research, March 30, 2024

[Zero Hedge](#)

Region: [USA](#)

Theme: [Intelligence](#)

All Global Research articles can be read in 51 languages by activating the Translate Website button below the author’s name (only available in desktop version).

To receive Global Research’s Daily Newsletter (selected articles), [click here](#).

Click the share button above to email/forward this article to your friends and colleagues. Follow us on [Instagram](#) and [Twitter](#) and subscribe to our [Telegram Channel](#). Feel free to repost and share widely Global Research articles.

[Global Research Fundraising: Stop the Pentagon’s Ides of March](#)

\*\*\*

*Here’s a live broadcast of the disaster area in Baltimore, Maryland.*

“Can we take the idea that this [Baltimore bridge collapse] was a terrorist attack off the table ... and absolutely we cannot do that,” President Trump’s former national security adviser (and retired lieutenant general) Michael Flynn told Alex Jones in an online interview.

REPORT: There were no vehicles traveling on the Francis Scott Key Bridge when it fell into the ocean thanks to heroic police officers who jumped into action.

It has now been confirmed that the only people on the bridge when it collapsed was a pothole repair crew.

A total of... [pic.twitter.com/U6PZPO8SDG](https://pic.twitter.com/U6PZPO8SDG)

— Collin Rugg (@CollinRugg) [March 26, 2024](#)

Flynn called the container ship ramming the 1.6-mile-long bridge mile bridge at the Port of Baltimore a “black swan” event.

EXCLUSIVE: General Flynn Calls Baltimore Barge Disaster A Black Swan Event  
[pic.twitter.com/NfDS5LUMBA](https://pic.twitter.com/NfDS5LUMBA)

— Alex Jones (@RealAlexJones) [March 26, 2024](#)

Meanwhile, the White House and federal government agencies have been quick to declare this was not a terror attack.

\*

Update (1423ET):

Maritime job placement company [BalticShipping](#) shows the captain of the container ship is a Ukrainian.

The screenshot shows the BalticShipping website interface. At the top, there's a navigation bar with links for SEAFARERS, VACANCIES, VESSELS, and CONTACTS, along with a login/register button. Below this, there's a header for 'DALI' with tabs for Summary, Current position, Worked on, and Comments. The main content area displays two profiles. The first profile is for a person with ID 9985, a Pakistani national, who applied for a Motorman/oiler position. The second profile is for a person with ID 33401, a Ukrainian national, who applied for a Master position. Both profiles include details such as availability, salary, citizenship, nationality, English proficiency, US Visa status, Schengen Visa status, last update, and nearest airport. The Ukrainian profile also highlights 'Ukraine' in yellow.

ID	Profile	Applied for	Alternative	Availability	Salary	Citizenship	Nationality	English	US Visa	Schengen Visa	Last Update	Nearest Airport
9985	Pakistani	Motorman/oiler	Not filled	22.02.2022	1600 USD/month	India	India	Upper Intermed. / Advanced	25.09.2024	Not filled	03.02.2022	DEL (Delhi, India - Delhi International Airport)
33401	Ukrainian	Master	Master	01.05.2024	10200 USD/month	Ukraine	Ukraine	Intermediate / Upper Intermed	14.11.2026	Not filled	03.03.2024	OTP (Bucharest, Romania - Otopeni)

Update (1356ET):

Bloomberg Intelligence reports:

Reinsurers Could Bear Brunt of Baltimore Bridge Collapse Claims

The bulk of claims from the March 26 Baltimore bridge collapse will likely fall on reinsurers. The ship has about \$3 billion of reinsurance coverage over a \$100 million retention. Chubb is reported to be the lead insurer on the bridge's property cover but might recover losses paid. We note it's still early, and this will be a complex loss.

\*

Update (1229ET):

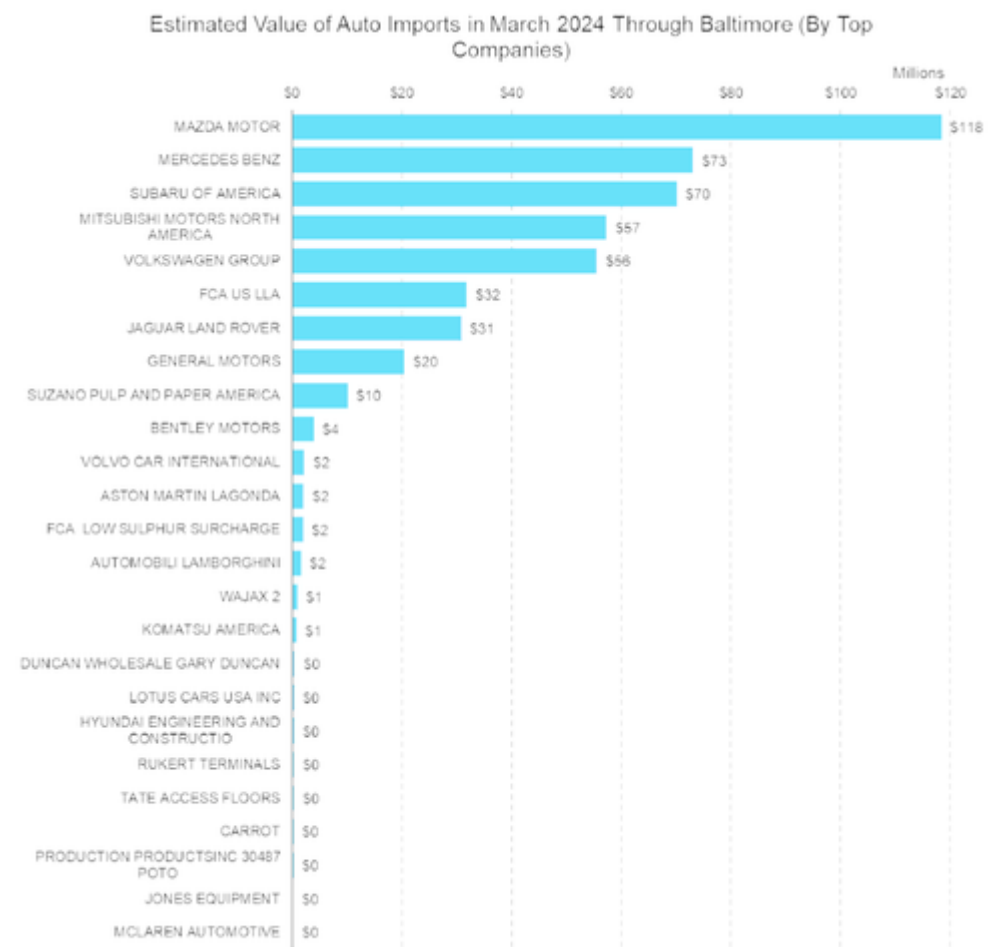
President Biden is expected to address the press at 1230 PM EST regarding the Francis Scott

Key Bridge collapse at the Port of Baltimore. At 0130 AM EST, a container ship lost propulsion and collided with the 1.6-mile-long bridge, leading to an instant collapse.

The current issue revolves around an emerging disruption in mid-Atlantic supply chains. The major East Coast port is now paralyzed due to the mangled bridge blocking the only shipping lane in and out of the harbor.



Bloomberg reports that the US automotive supply chain will be disrupted. Data shows that Mazda Motor and Mercedes Benz, Subaru of America, Mitsubishi Motors of North America, and Volkswagen Group have the most exposure to the port.



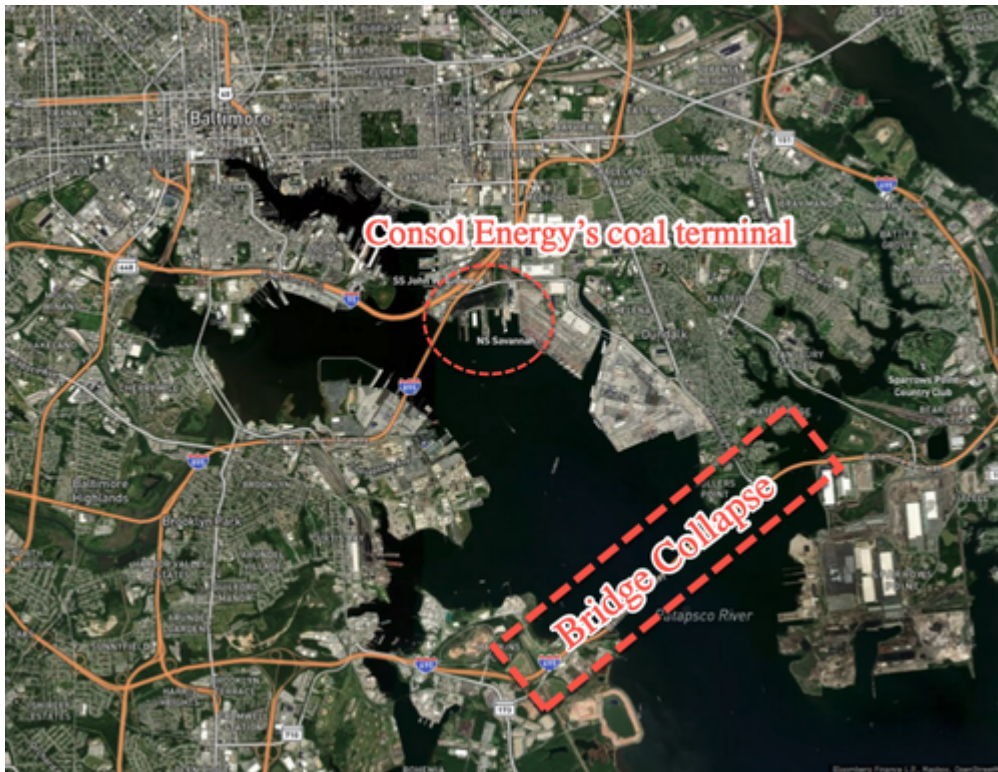
Source Bloomberg: `=@BSRCH("TPD DEX", "BIKEY=SAYMRO1NRY19", "cols=17;rows=1001")`

Source: Bloomberg

"It's a large port with a lot of flow through it, so it's going to have an impact," John Lawler, Ford Motor Co.'s chief financial officer, said Tuesday on Bloomberg TV.

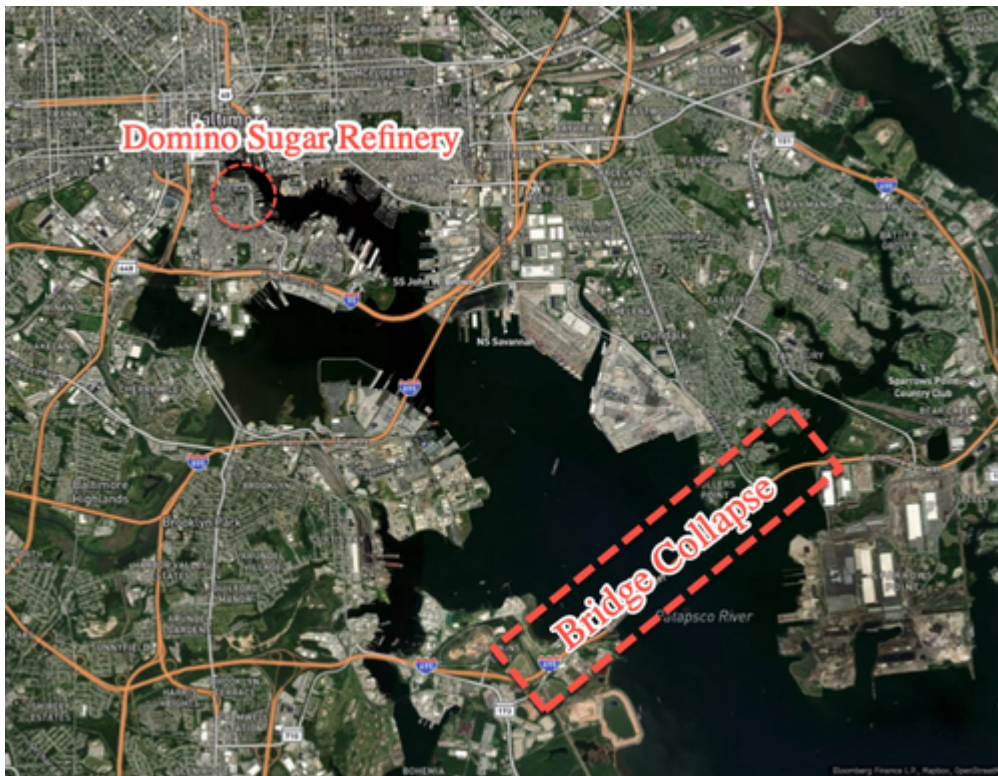
Lawler continued, "We'll work on the workarounds. We'll have to divert parts to other ports along the East Coast or elsewhere in the country."

Earlier, Consol Energy shares plunged nearly 10%, the most since October, as the bridge collapse will affect its massive coal terminal, which is served by CSX trains.

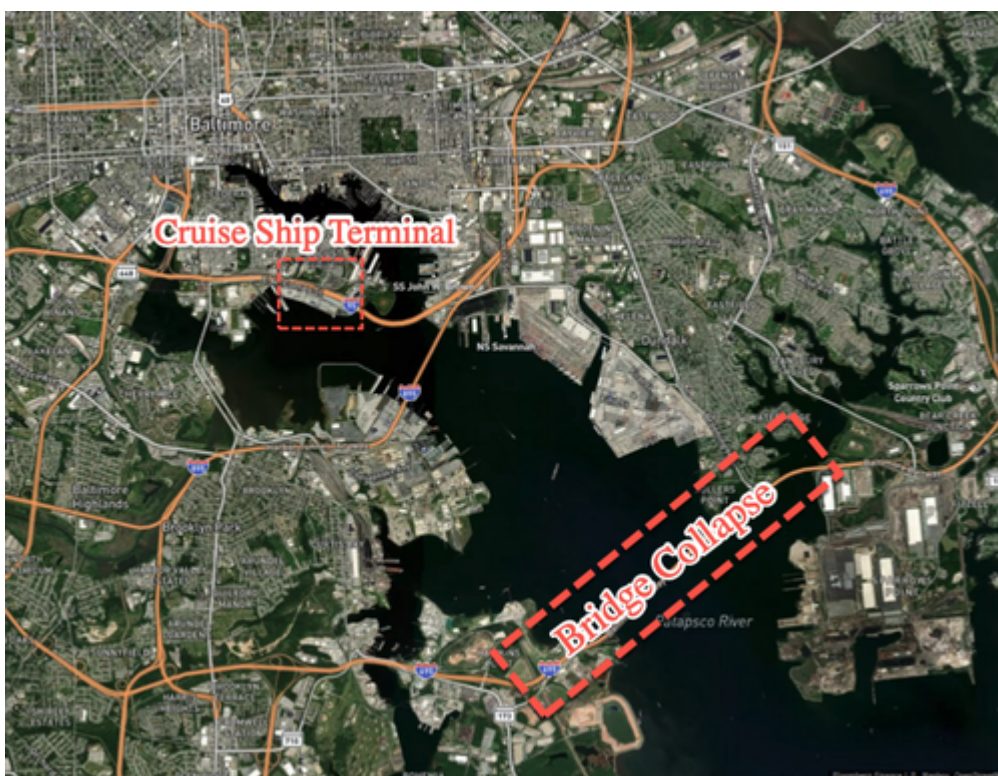


A major sugar refinery owned by American Sugar Refining Inc. warned its Domino Sugar refinery only has six to eight weeks of raw sugar supplies as the blockage affects ships moving in and out of the port.





Major cruise ship terminal



The supply chain snarls have sent major logistics companies scrambling across the US East Coast on Tuesday afternoon.

“Our first priority is engaging clients to make plans for containers that were originally routed to Baltimore that will be discharged at other ports on the Eastern Seaboard,” Paul Brashier, vice president of drayage and intermodal for ITS Logistics, told CNBC.

“These diverted volumes will impact the ports of New York/New Jersey, Norfolk and the

Southeast and we have to prepare trucking and transload capacity to get that freight to its intended network,” Brashier said.

Goetz Alebrand, senior vice president and head of ocean freight for the Americas at DHL Global Forwarding, told CNBC:

“The immediate impact is with the cargo on board and its accessibility. Other planned shipments through Baltimore will likely be rerouted, potentially increasing cargo flow to New York, Norfolk, and nearby ports.

“Bulk and car carriers reliant on Baltimore must assess operations in the event of a prolonged closure.”

According to the shipping journal Lloyd’s List, Baltimore is the eleventh-largest port in the nation, making an average of 207 port calls per month.

\*

Update (1018ET):

An unclassified report from the DHS National Operations Center says the container ship “lost propulsion” before it rammed the Francis Scott Key Bridge.

UNCLASSIFIED//FOR OFFICIAL USE ONLY

*The DHS National Operations Center has expanded reporting on this incident to the Awareness level to include DHS mission partners at the federal, state, and local levels. The report below may include information in prior reporting by the DHS National Operations Center but warrants additional situational awareness throughout the broader Homeland Security Enterprise.*

(U) **Overview:** The Francis Scott Key (FSK) Bridge in Baltimore, MD has collapsed after being struck by a motor vessel. There are reports of missing individuals from the bridge.

(U) The bridge was undergoing maintenance but was open to traffic. USCG reports Motor Vessel DALI (Singapore Flagged) lost propulsion as it was leaving Baltimore Harbor. The vessel notified MD Department of Transportation (MDOT) that they had lost control of the vessel and an allision with the bridge was possible. The vessel struck the bridge causing a complete collapse. Construction crews were on the bridge, and approximately 20 individuals are missing and believed to be in the water. One worker was recovered from the water and his condition is unknown. The MD Transportation Authority reported all lanes on I-695 Key Bridge are closed in both directions.

(U) All personnel on the DALI are accounted for, one has minor injuries. There is significant damage above the water line to the vessel. No significant pollution has been reported. USCG Stations Curtis Bay and Annapolis assets are on scene with aircraft inbound from USCG Atlantic City. Baltimore County Police, Baltimore City Police, MDOT, MD State Police, and MD Natural Resources Police are on scene.

(U) USCG closed the waterway into and out of Baltimore Harbor and is enforcing a safety zone. The FSK Bridge is a major transportation route spanning the Patapsco River and the outer Baltimore Harbor. It is part of the Baltimore beltway (I-695) and is designated a HAZMAT truck route, as HAZMAT is prohibited in the tunnels around Baltimore. It carries an estimated 11.5M vehicles annually. The MD EOC is at enhanced status.

(U) For additional information, refer to the [DHS Common Operating Picture](#) and the [Homeland Security Information Network](#).

(U) **Coordination:** The NOC will continue to coordinate with USCG NCC, CISA Central, and FEMA-NWC for additional information, and will report as warranted.

(U) **Distribution:** DHS HQ Leadership and Senior Staff, DHS Component Leadership and Operations Centers, WHSR, Federal Interagency Operations Centers, and State and Local Mission Partners.

Here's a video of the incident:

Video seems to show repeated power losses on ship just before it destroyed Francis Scott Key Bridge. [pic.twitter.com/REoGCL9zcu](https://pic.twitter.com/REoGCL9zcu)

— Tom Fitton (@TomFitton) [March 26, 2024](#)

Update (0935ET):

[Bloomberg's Brendan Murray](#) explains how the collapsed bridge blocking the only shipping lane in and out of the Port of Baltimore is about to spark a supply chain crisis across the Mid-Atlantic:

An economic disruption along the US East Coast is unfolding with potentially tragic human consequences after a container ship struck the Francis Scott Key Bridge in Baltimore, sending nearly the entire roadway structure crumbling into the water.

The immediate priority of the rescuers is finding people who may have been on the



bridge either working or driving across. The ship, the Singapore-registered Dali, was operated by charter company Synergy Group and is time chartered by Maersk carrying Maersk customers' cargo.

Of secondary concern in the days ahead will be tough questions about the effect on business, commuters, holiday travelers and the economy across the region.

The Port of Baltimore — the biggest handler of US imports and exports of cars and light trucks — looks to be out of commission indefinitely. The resulting bottleneck could accelerate a shift of goods through West Coast ports. Another crucial question: Which other ports have spare capacity to handle the Ro-Ro vessels that carry automobiles if Baltimore is closed for an extended period.

And it begins:

One very big logistical complication in the Baltimore bridge collapse is that the Francis Scott Key Bridge was the main route for hazardous materials (which aren't allowed to be transported through the tunnels) [pic.twitter.com/dj2vR7OVdL](https://pic.twitter.com/dj2vR7OVdL)

— Tracy Alloway (@tracyalloway) [March 26, 2024](#)

\*

Update (0814 ET):

ABC News reports the Singapore-flagged "Dali" container ship "lost propulsion" as it left the Port of Baltimore just before it rammed the Francis Scott Key Bridge.

"The vessel notified MD Department of Transportation (MDOT) that they had lost control of the vessel and a collision with the bridge was possible," ABC quoted the US Cybersecurity and Infrastructure Security Agency as saying, adding, "The vessel struck the bridge causing a complete collapse."

Bloomberg's Josh Wingrove says, "Authorities are heavily downplaying the risk of foul play here."

Authorities are heavily downplaying the risk of foul play here.

"We don't see anything that relates to that at this time. It's an open investigation but there's nothing that points to that," Wiedefeld said.

No indication as of now of "nefarious intent," per the White House.

— Josh Wingrove (@josh\_wingrove) [March 26, 2024](#)

Meanwhile, some X users are saying:

□ Baltimore, Maryland



SITREP: The Francis Scott Key Bridge was Struck by a Cargo Ship, Collapsing the Bridge

- My opinion is This was a potential cyber attack. Notice the ship lights go off before steering into the column

- Sonar indicates that several vehicles are in the... [pic.twitter.com/mlI8BG5Xed](https://pic.twitter.com/mlI8BG5Xed)

— MJTruthUltra (@MJTruthUltra) [March 26, 2024](#)

Is the US under attack?

Cargo ship slams into the Francis Scott Key Bridge causing bridge to collapse.

Multiple cars plunge into the water. Currently, rescue teams are on the scene. So sad. Please Pray for these families🙏🙏🙏

[pic.twitter.com/EcCo6AOqiG](https://pic.twitter.com/EcCo6AOqiG)

— Sue Knows Best (@sues86453) [March 26, 2024](#)

BREAKING🚨: Mass Casualties. Ship collides with Francis Scott Key Bridge in Baltimore. This comes just days after the Crocus terror attack in Moscow which has been widely blamed on the West. [pic.twitter.com/zgC4tO24wH](https://pic.twitter.com/zgC4tO24wH)

— Alex James (@actualAlexJames) [March 26, 2024](#)

Analyzed footage of the Baltimore Harbor incident.

The MSM says this was an accident, with no evidence of foul play. What say you?

Responders are still searching for at least 7 people in the Key Bridge area of Baltimore, Maryland. [pic.twitter.com/LGxLMLGUPd](https://pic.twitter.com/LGxLMLGUPd)

— Eddie (@ICU1010) [March 26, 2024](#)

Update (0645 ET):

A massive container ship chartered by Maersk and moving outbound from the Port of Baltimore struck the Francis Scott Key Bridge around 0130 ET. The bridge collapse has paralyzed a large swath of the largest inland port on the East Coast. The port is ranked 9th for total dollar value of cargo and 13th for cargo tonnage among US ports.

Governor Wes Moore released a statement on the collapse, declaring a State of Emergency in Maryland:

"My office is in close communication with US Transportation Secretary Pete Buttigieg, Baltimore Mayor Brandon Scott, Baltimore County Executive Johnny Olszewski, and the Baltimore Fire Department as emergency personnel are on the scene following the collapse of the Francis Scott Key Bridge. I have declared a State of Emergency here in Maryland and we are working with an interagency team to quickly deploy federal resources from the Biden Administration. We are thankful for the brave men and women who are carrying out efforts to rescue those involved and pray for everyone's safety. We will remain in close contact with federal, state, and local entities that are carrying out rescue efforts as we continue to assess and respond to this tragedy."

Chief Kevin Cartwright, the Baltimore City Fire Department's director of communications, told [Fox Baltimore](#) that at least 20 people and several vehicles had fallen into the river.

In markets, Maersk shares in Copenhagen are trading down more than 3% on the news.



Shocking radio transmission: "The entire Key Bridge is in the harbor."

Radio traffic from the first arriving [@BaltimoreFire](#) unit.

"SOC5 to Battalion 6 and Communications, I'm at Fort Armistead, be advised the entire bridge, the entire Key Bridge is in the harbor."  
[pic.twitter.com/wTIPxLStRf](https://pic.twitter.com/wTIPxLStRf)

— Andrew Doyle (@doyle0213) [March 26, 2024](#)

Shocking footage is coming from Baltimore City, home to one of the nation's largest marine ports. It shows a container ship striking the 1.6-mile-long Francis Scott Key Bridge and collapsing it.

☐ [#BREAKING](#): Mass Casualty has been Declared after a Large Container Ship Collides with Key Bridge Causing it completely Collapse<sup>0</sup>  
☐ [#Baltimore](#) | [#Maryland](#)

Currently, numerous agencies, including the Coast Guard and fire department have just declared a mass casualty incident as... [pic.twitter.com/wvOTOVbvHE](https://pic.twitter.com/wvOTOVbvHE)

— R A W S A L E R T S (@rawsalerts) [March 26, 2024](#)

Here's another view of the container ship strike.

The Francis Scott Key Bridge in Baltimore, Maryland which crosses the Patapsco River has reportedly Collapsed within the last few minutes after being Struck by a Large Container Ship; a Mass Casualty Incident has been Declared with over a Dozen Cars and many Individuals said to...  
[pic.twitter.com/SsPMU8Mjph](https://pic.twitter.com/SsPMU8Mjph)

— OSINTdefender (@sentdefender) [March 26, 2024](#)

"This effectively shuts down the Port of Baltimore completely. I'm truly speechless," one X user said.

Pictured: Francis Scott Key Bridge collapsed. This is the bridge I drive every single day. This effectively shuts down the Port of Baltimore completely. I'm truly speechless [pic.twitter.com/BzqPa3axJ2](https://pic.twitter.com/BzqPa3axJ2)

— Wade Raynor (@WadeRaynor\_) [March 26, 2024](#)

Fox Baltimore's Olivia Dance describes the scene as "devastating."

Photos of the collapsed Key Bridge sent to us by residents in the area.

Devastating. [@FOXBaltimore](#) [pic.twitter.com/vh5MP477jl](https://pic.twitter.com/vh5MP477jl)

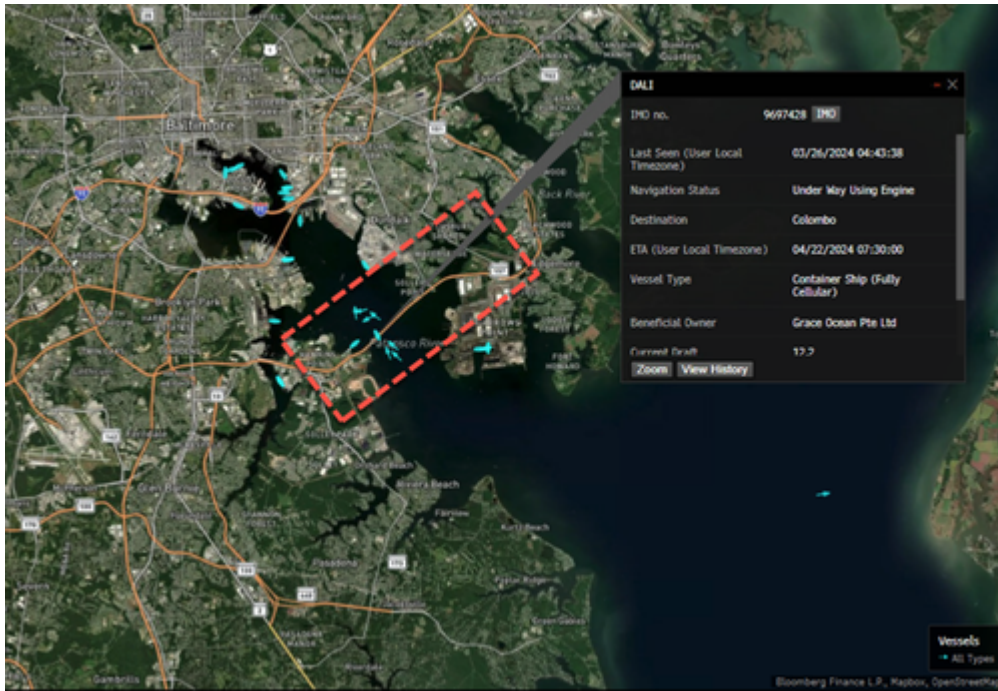
— Olivia Dance (@OliviaDanceTV) [March 26, 2024](#)

According to the ship tracking website MarineTraffic, the Singapore-flagged cargo ship "Dali" slammed into the Francis Scott Key Bridge around 0130 ET. Bloomberg notes the ship was chartered by Maersk (remember Maersk's Ever Given in the Suez Canal a few years ago?).

[#MarineTraffic](#) playback showing [#Dali](#), a Singapore-flagged cargo ship, colliding with Francis Scott Key Bridge in [#Baltimore](#). En route to Colombo, Sri Lanka, it crashed at 1:30am. Follow rescue efforts on MarineTraffic and find out more about the vessel: <https://t.co/5eiDnqpm2w> [pic.twitter.com/fyqx9cWUF3](https://pic.twitter.com/fyqx9cWUF3)

— MarineTraffic (@MarineTraffic) [March 26, 2024](#)

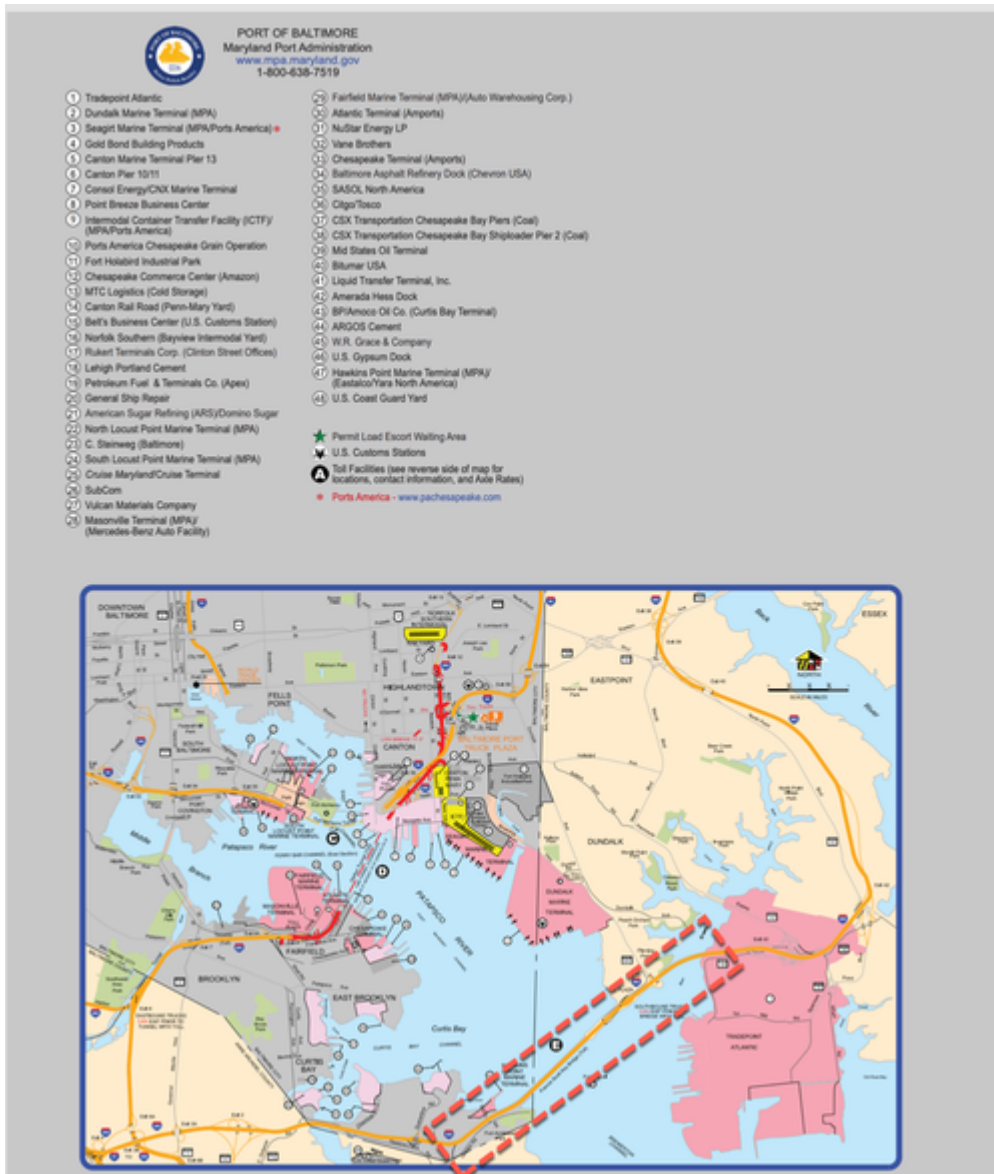
The bridge spans the Patapsco River and carries an estimated 11.5 million vehicles annually. In this collapse, the only shipping lane in and out of the port was severed.



Baltimore is the most inland port on the East Coast and is connected to the I-95 highway network. With no commercial vessels sailing in and out of port anytime soon, this is catastrophic for port operations and could spark supply chain snarls in the Mid-Atlantic and Northeast. We suspect inbound vessels are rerouting sails this morning.

The bridge collapse has severed these major marine terminals. It's unknown when operations will be restored.





According to the Maryland government's website, the Port of Baltimore handled over 52 million tons of international cargo valued at more than \$80 billion last year, ranking it as the ninth busiest port in the United States. The data shows that the port handled 847,158 autos and light trucks in 2023, the most of any US port. The port also handles farm and construction machinery, sugar, gypsum, and coal.

The port supports 15,330 direct jobs and 139,180 jobs in Maryland, according to the Maryland government's website.

Baltimore Mayor Brandon Scott's office posted on X:

"I'm aware of and en route to the incident at the Key Bridge. I have been in contact with Baltimore Fire Chief James Wallace, Gov. Wes Moore (and the county executives of Baltimore and Anne Arundel counties). Emergency personnel are on scene, and efforts are underway."

*Developing...*

\*

Note to readers: Please click the share button above. Follow us on Instagram and Twitter and subscribe to our Telegram Channel. Feel free to repost and share widely Global Research articles.

*All images in this article are from ZH unless otherwise stated*

The original source of this article is [Zero Hedge](#)

Copyright © [Zero Hedge](#), [Zero Hedge](#), 2024

---

**[Comment on Global Research Articles on our Facebook page](#)**

**[Become a Member of Global Research](#)**

Articles by: [Zero Hedge](#)

**Disclaimer:** The contents of this article are of sole responsibility of the author(s). The Centre for Research on Globalization will not be responsible for any inaccurate or incorrect statement in this article. The Centre of Research on Globalization grants permission to cross-post Global Research articles on community internet sites as long the source and copyright are acknowledged together with a hyperlink to the original Global Research article. For publication of Global Research articles in print or other forms including commercial internet sites, contact: [publications@globalresearch.ca](mailto:publications@globalresearch.ca)

[www.globalresearch.ca](http://www.globalresearch.ca) contains copyrighted material the use of which has not always been specifically authorized by the copyright owner. We are making such material available to our readers under the provisions of "fair use" in an effort to advance a better understanding of political, economic and social issues. The material on this site is distributed without profit to those who have expressed a prior interest in receiving it for research and educational purposes. If you wish to use copyrighted material for purposes other than "fair use" you must request permission from the copyright owner.

For media inquiries: [publications@globalresearch.ca](mailto:publications@globalresearch.ca)